

# AVAILABLE FOR SUBLEASE



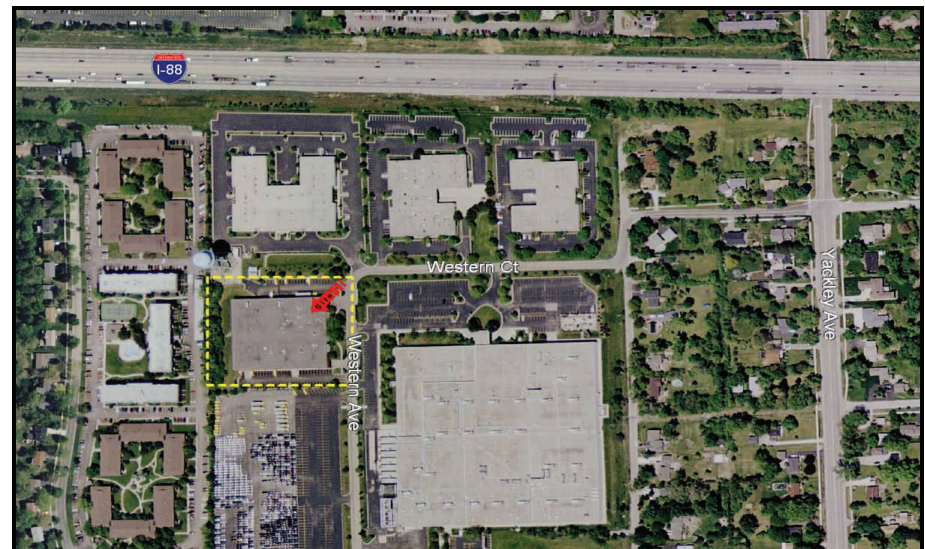
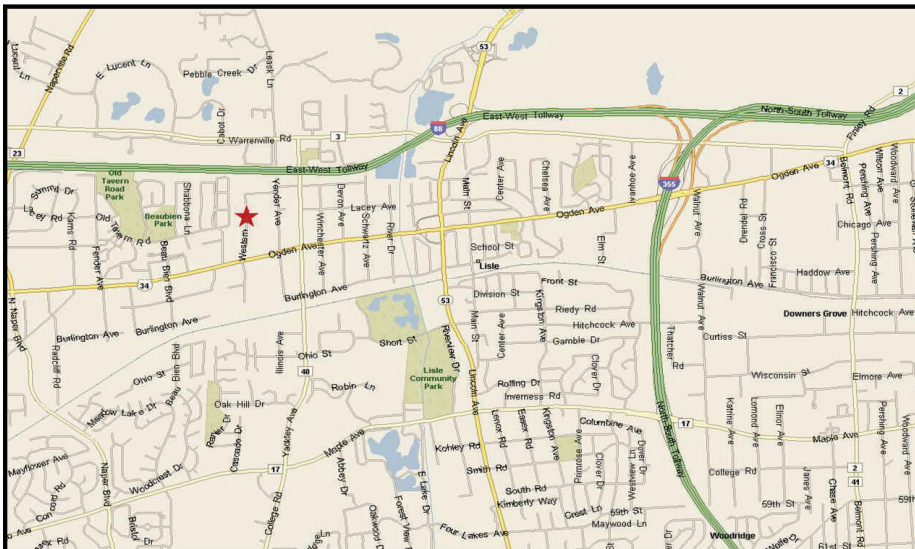
45 Western Avenue, Lisle, IL

## PROPERTY OVERVIEW

- 67,669 Sq. Ft. Available
- 10,640 Sq. Ft. of Office
- 22' Clear
- 4 Exterior Docks, 3 DIDs
- 40'x40' Column Spacing
- Trench Drains

For more information contact:

**Jeanne Rogers, CCIM SIOR**  
Executive V.P./Partner  
847-627-4223 (direct)  
jrogers@arthurjrogers.com  
www.arthurjrogers.com



**4500 Western Avenue  
Lisle, IL**

**BUILDING/PROPERTY SPECIFICATIONS**

---

**DuPage County**

**Available:** 57,356 Sq. Ft. – Warehouse  
10,640 Sq. Ft. – Office  
67,996 Sq. Ft – Total

**Site Size:** 1.69 Acres

**Built:** 1991

**Ceiling Heights:** 22' clear

**Loading:** 4 exterior docks  
3 drive-in doors

**Column Spacing:** 40' x 40'

**Parking:** 66 Cars

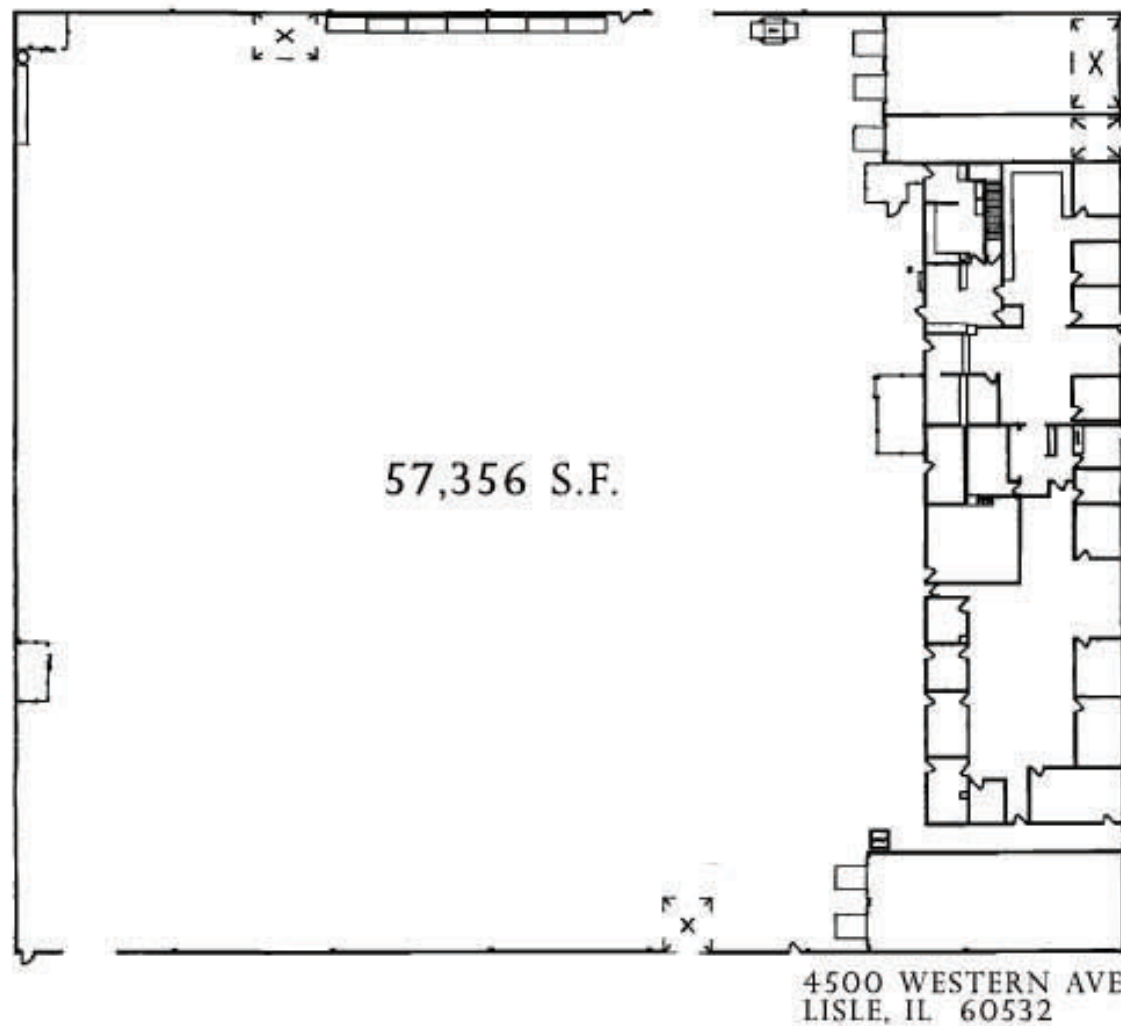
**Sprinkler:** Wet

**Floors:** Trench drains

**Sublease Expiration Date:** 11/30/2010



**Contact:** Jeanne Rogers, CCIM SIOR  
847-627-4223  
jrogers@arthurjrogers.com



WAREHOUSE/OFFICE FLOOR PLAN