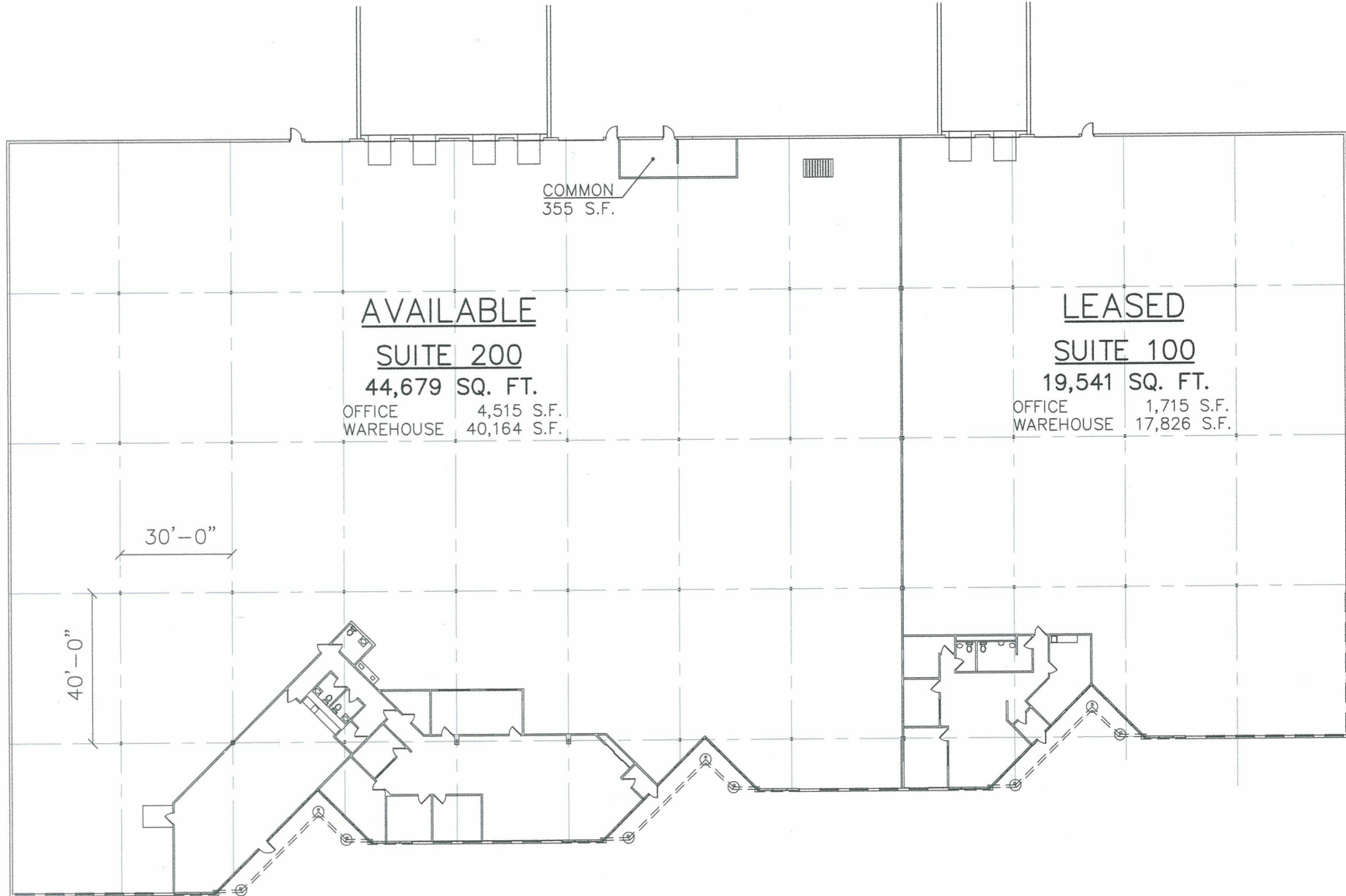


3505 THAYER COURT

Aurora, IL



365 Glen Farm Lane Lake Zurich, IL 60047
TEL/FAX: 847.726.9517



FIRST INDUSTRIAL REALTY TRUST, INC.
9450 W. Bryn Mawr Avenue, Suite 750
Rosemont, Illinois 60018
847.233.7306 Fax: 847.233.0058

FLOOR PLAN

SCALE: 1" = 40'-0"



Date: 12/29/05

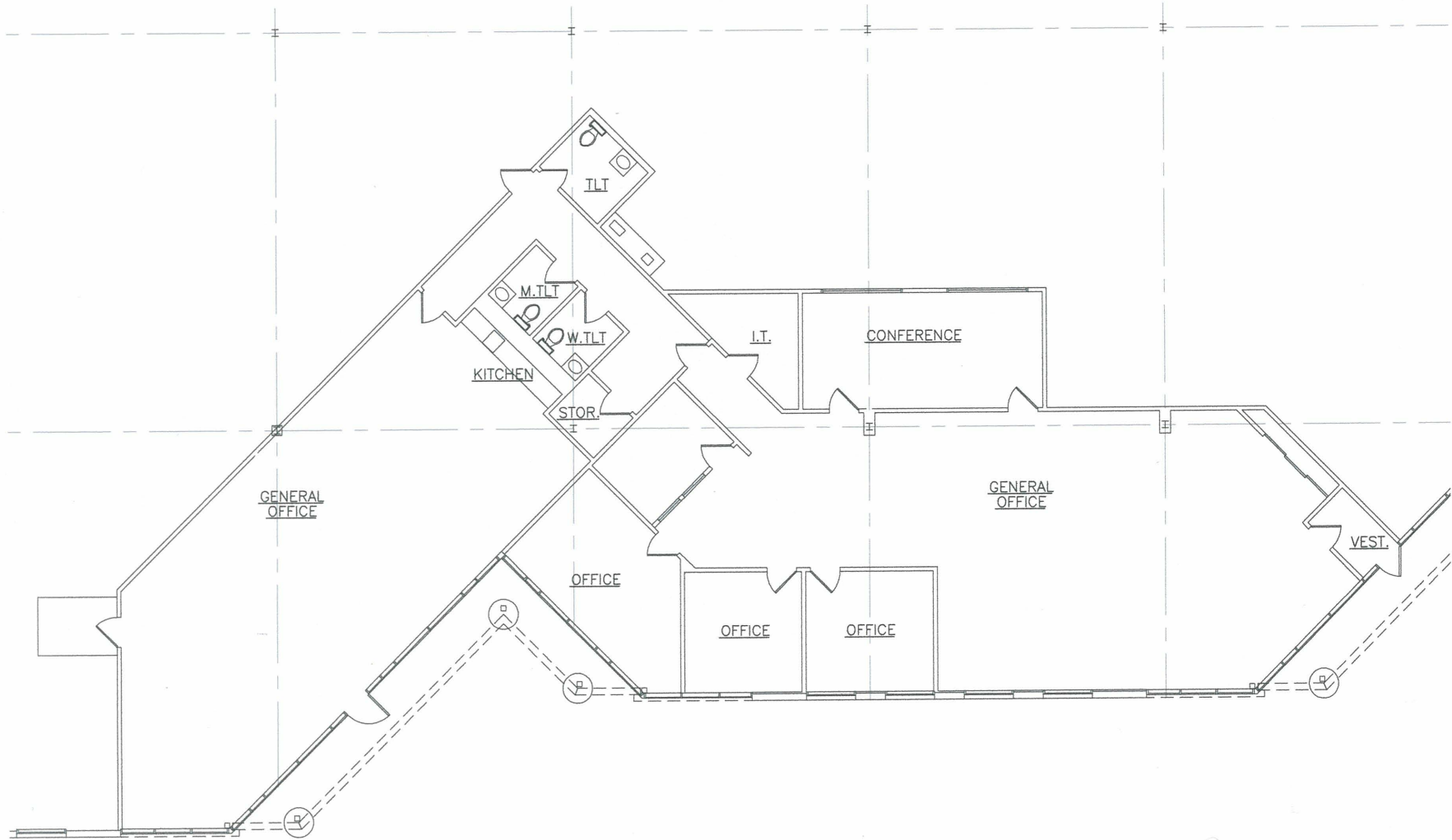
Dwg: 5081

Drawn by: SGM

© 2005 SGM Architects

3505 THAYER COURT

Aurora, IL



SGM • Architects
ARCHITECTURE PLANNING DESIGN

365 Glen Farm Lane Lake Zurich, IL 60047
TEL/FAX: 847.726.9517



FIRST INDUSTRIAL REALTY TRUST, INC.
9450 W. Bryn Mawr Avenue, Suite 750
Rosemont, Illinois 60018
847.233.7306 Fax: 847.233.0058

OFFICE PLAN

SCALE: 1/16" = 1'-0"



Date: 12/29/05

Dwg: 5081

Drawn by: SGM

© 2005 SGM Architects